

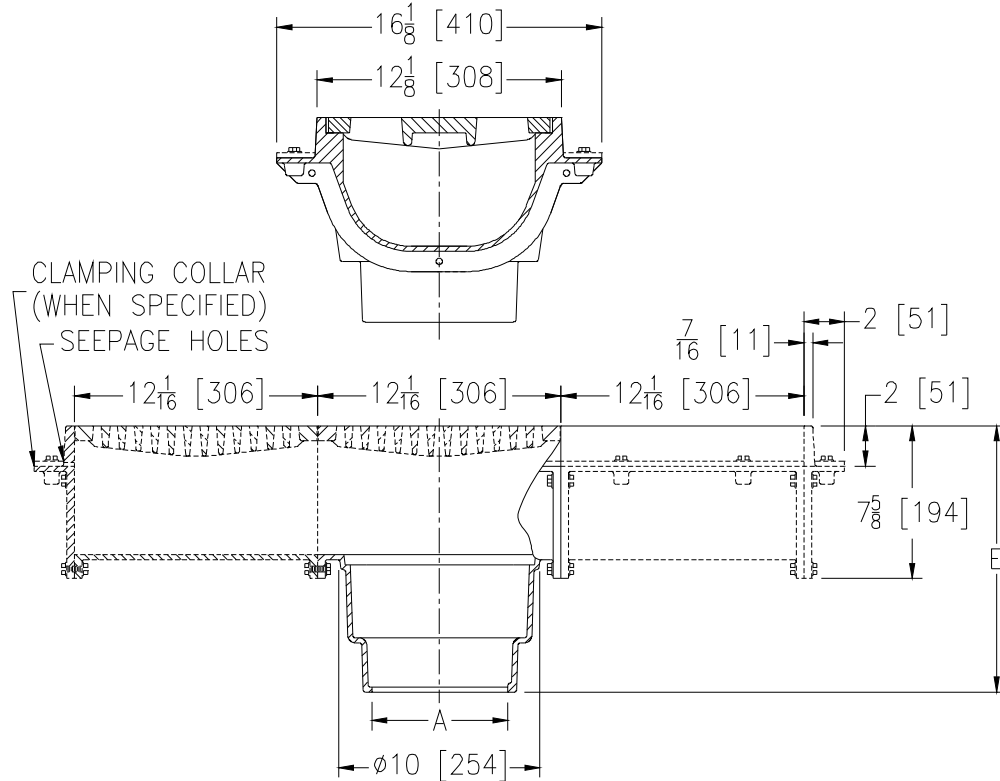


Z665

**12 [305] WIDE MODULAR TRENCH DRAIN
HEAVY-DUTY**

TAG _____

Dimensional Data (inches and [mm]) are Subject to Manufacturing Tolerances and Change Without Notice



A Pipe Size	Approx. Wt. Lbs. [kg]	Grate Open Area Sq. In. [cm ²]
2, 3, 4 [51, 76, 102]	100 [45]	35 [226]
5, 6 [127, 152]	110 [50]	

ENGINEERING SPECIFICATION ZURN Z665

12 [305] Wide top modular trench drain, Dura-Coated cast iron deep sump body with bottom outlet. Both 12 [305] long outlet module and extension modules are complete with integral seepage pan and heavy-duty loose slotted grate.

OPTIONS (Check/specify appropriate options)

PIPE SIZE

- 2 thru 6 [51 thru 152]
- 2 thru 4, 6 [51 thru 102, 152]
- 2 thru 4 [51 thru 102]

(Specify size/type) **OUTLET**

- ___ IC Inside Caulk
- ___ IG Inside Gasket
- ___ NL Neo-Loc

'E' BODY HT. DIM.

- 13-3/16 [335]
- 13-3/16 [335]
- 12-1/2 [318]

PREFIXES

- ___ Z D.C.C.I. Body and Top*
- ___ ZB D.C.C.I Body w/Polished Bronze Top (Add 1/8 [3] to 'E' and 2 [51] Dim.)
- ___ ZN D.C.C.I Body w/Polished Stainless Steel Top (Add 1/8 [3] to 'E' and 2 [51] Dim.)

SUFFIXES

- ___ -AR Acid Resisting Epoxy Coated Cast Iron (Per Section)
- ___ -C Clamp Collar (Per Section)
- ___ -DB Bottom Dome Strainer (Per Outlet Section)
- ___ -DG Duresist Grate (Per Section)
- ___ -ES 12 [305] Extension Section (Specify Number of Sections Required)
- ___ -G Galvanized Cast Iron (Per Section)
- ___ -HP Heel-Proof Grate (ZB and ZN Only) (Per Section)
- ___ -M Side Outlet Adapter Via End Plate
- ___ -SB Shallow Body (Bucket not Available)
- ___ -SQ Square Slotted Medium-Duty Grate
- ___ -TC Neo-Loc Test Cap Gasket (2 [51] - 4 [102] NL Bottom Outlet Only)
- ___ -TS Top Secured with Slotted Screws (Per Section)
- ___ -VP Vandal-Proof Secured Top (Per Section)
- ___ -Y Sediment Bucket (Per Outlet Section)

REV. G	DATE: 11/8/10	C.N. NO. 120330
DWG. NO. 59250	PRODUCT NO. Z665	

*REGULARLY FURNISHED UNLESS OTHERWISE SPECIFIED